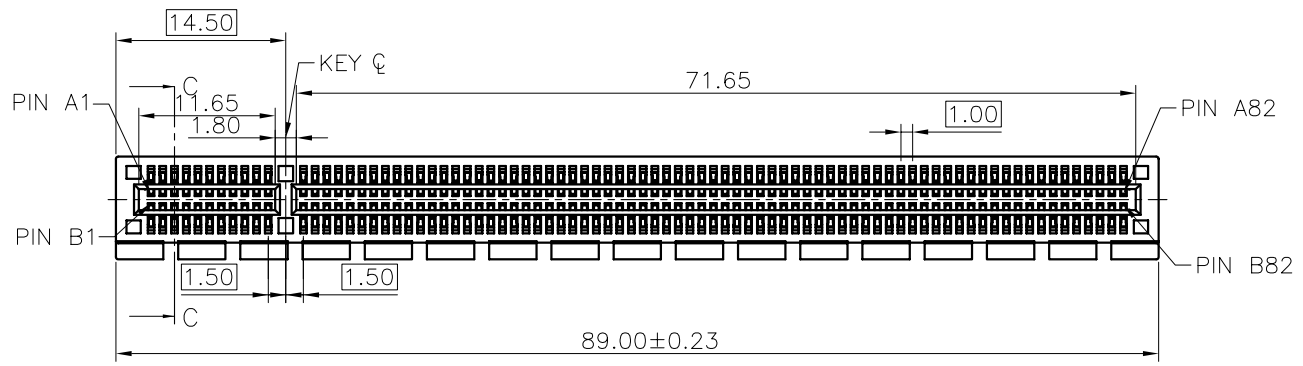


REV.	ECN NO. / DESCRIPTION	DATE
1	N030263	10/17'03
2	N040207	05/21'04
3	N070146	05/21'07

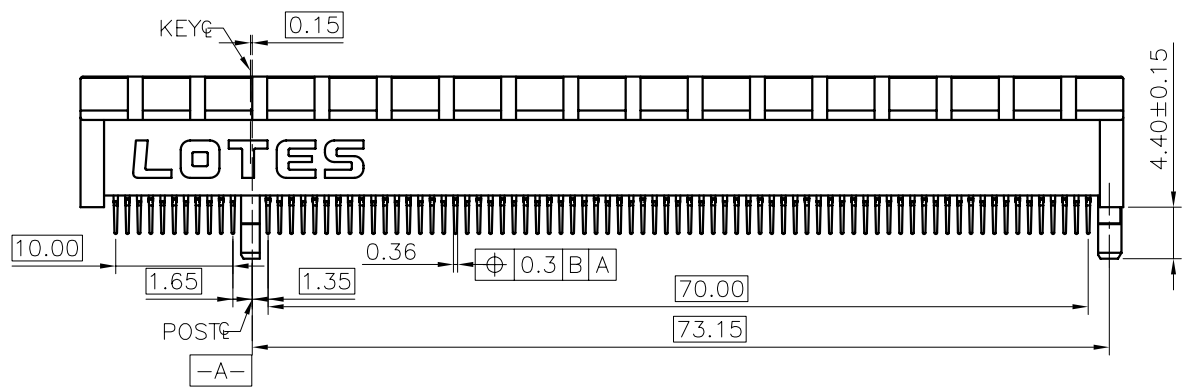
F

F



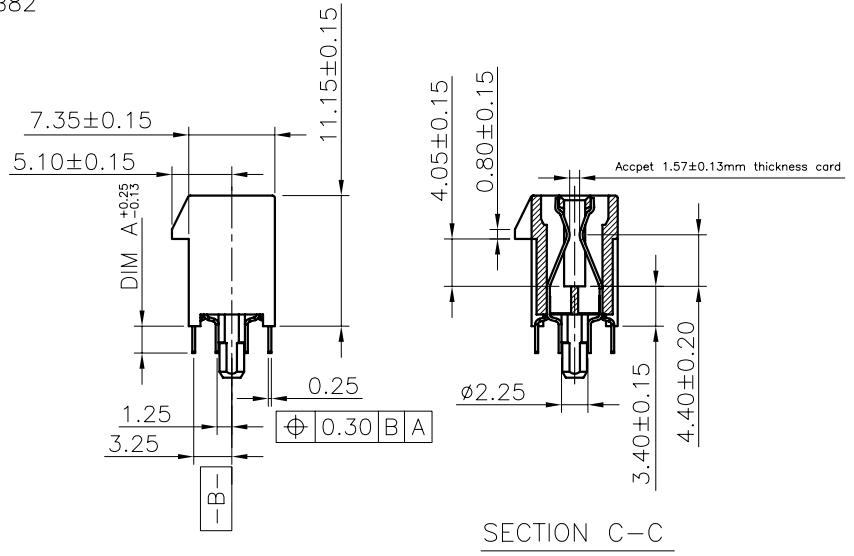
E

E



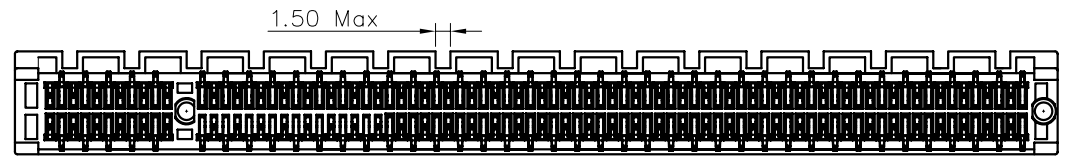
D

D



C

C



B

B

GENERAL TOLERANCES UNLESS SPECIFIED		PART NO.		LOTES		
X±0.35	X°± 3'	SEE TABLE				
.XX±0.25	X°± 2'	APPROVED BY		TITLE		
.XXX±0.15	.XX°± 1'	JOE 05/21/07		164PIN PCI-EXPRESS CONNECTOR		
CUSTOMER DRAWING		CHECKED BY		DWG NO.		
		JOE 05/21/07		GAP-AAA-PCI-006		
SIZE	UNITS	DRAWN BY		SHEET	SCALE	REV
A4	MM [INCH]	LEI 05/21'07				

A

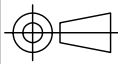
A

ITEM	COMPONENT	QUANTITY	MATERIAL	FINISH	DIM "A"
2	TERMINAL	164	PHOSPHOR BRONZE	GOLD PLATING ON CONTACT AREA	2.30mm OR 3.10mm
1	HOUSING	1	PA46	COLOR: BLACK OR WHITE AND SO ON	

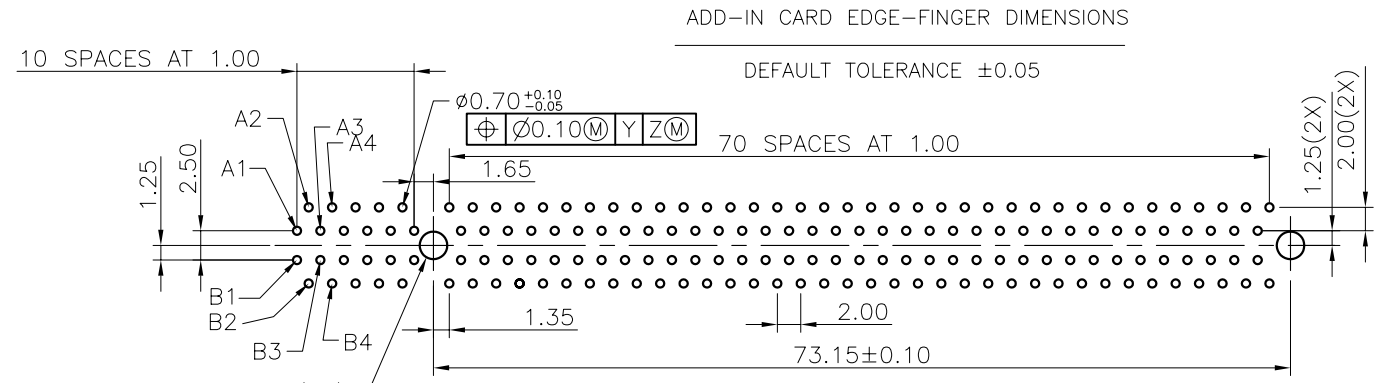
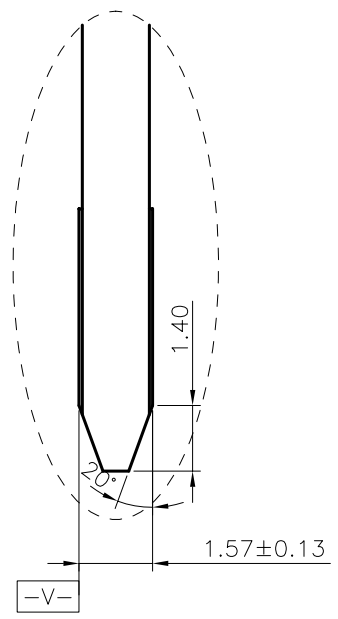
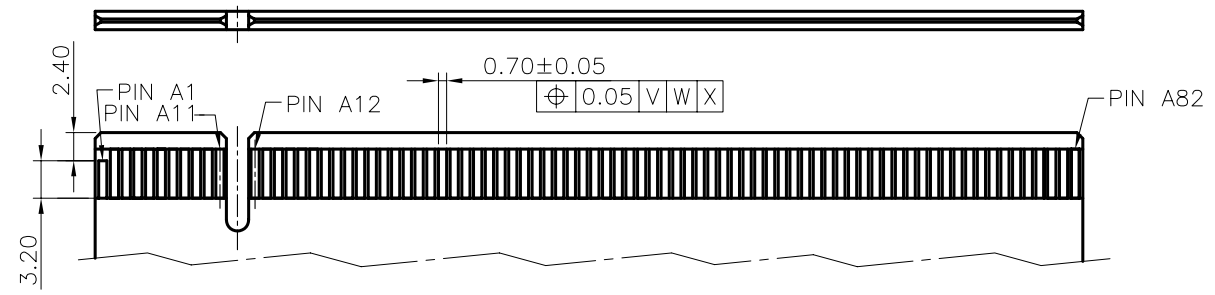
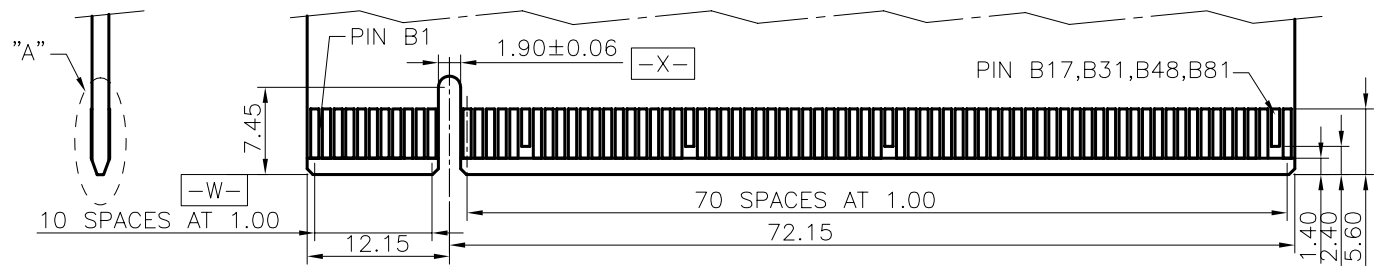
1 2 3 4 5 6 7 8

REV.	ECN NO. / DESCRIPTION	DATE
1	N030263	10/17'03
2	N040207	05/21'04
3	N070146	05/21'07

PART NUMBER	SPECIFICATION	DIM A
AAA-PCI-006-K01	PA46_BLACK; PHOSPHOR BRONZE_15U POST; L.T.LEAD FREE.	2.30mm
AAA-PCI-006-K02	PA46_BLACK; PHOSPHOR BRONZE_GOLD FLASH; POST; L.T.LEAD FREE.	2.30mm
AAA-PCI-006-K03	PA46_WHITE; PHOSPHOR BRONZE_GOLD FLASH; POST; L.T, LEAD FREE	2.30mm
AAA-PCI-006-K04	PA46_WHITE; PHOSPHOR BRONZE_15u; POST; L.T, LEAD FREE	2.30mm
AAA-PCI-006-K05	PA46_BLACK; PHOSPHOR BRONZE_15u; POST; L.T.LEAD FREE.	3.10mm
AAA-PCI-006-K06	PA46_WHITE; PHOSPHOR BRONZE_15u; POST; L.T, LEAD FREE	3.10mm
AAA-PCI-006-K18	PA46_BLACK; PHOSPHOR BRONZE_GOLD FLASH; POST; L.T, LEAD FREE	2.30mm
AAA-PCI-006-K19	PA46_BLACK; PHOSPHOR BRONZE_GOLD FLASH; POST; L.T, LEAD FREE	3.10mm
AAA-PCI-006-K22	PA46_BLACK; PHOSPHOR BRONZE_15U; POST; L.T, LEAD FREE	3.10mm
AAA-PCI-006-K23	PA46_BLACK; PHOSPHOR BRONZE_GOLD FLASH; POST; L.T, LEAD FREE	2.30mm
AAA-PCI-006-K25	PA46_BLACK; PHOSPHOR BRONZE_30U; POST; L.T, LEAD FREE	3.10mm
AAA-PCI-006-K31	PA46_BLACK; PHOSPHOR BRONZE_15U; POST; L.T, LEAD FREE	2.30mm
AAA-PCI-006-K33	PA46_BLACK; PHOSPHOR BRONZE_30U; POST; L.T, LEAD FREE	2.30mm
AAA-PCI-006-P35	HTN_BLACK; PHOSPHOR BRONZE_15U; POST; L.T, HF	2.30mm

GENERAL TOLERANCES UNLESS SPECIFIED		PART NO. SEE TABLE	LOTES			
.X±0.35	X°± 3°					
.XX±0.25	.X°± 2°	APPROVED BY JOE 05/21/07	TITLE 164PIN PCI-EXPRESS CONNECTOR			
.XXX±0.15	.XX°± 1°	CHECKED BY JOE 05/21/07	DWG NO. GAP-AAA-PCI-006			
CUSTOMER DRAWING		DRAWN BY LEI 05/21'07		SHEET	SCALE	REV
SIZE A4	UNITS MM[INCH]			2 / 3	3:2	3

REV.	ECN NO. / DESCRIPTION	DATE
1	N030263	10/17'03
2	N040207	05/21'04
3	N070146	05/21'07



RECOMMENDED FOOTPRINT(TOP VIEW)
 DEFAULT TOLERANCE ±0.05

ADD-IN CARD EDGE-FINGER DIMENSIONS
 DEFAULT TOLERANCE ±0.05

GENERAL TOLERANCES UNLESS SPECIFIED		PART NO. SEE TABLE	LOTES		
X±0.35	X°± 3°				
.XX±0.25	.X°± 2°	APPROVED BY JOE 05/21/07	TITLE 164PIN PCI-EXPRESS CONNECTOR		
.XXX±0.15	.XX°± 1°	CHECKED BY JOE 05/21/07	DWG NO. GAP-AAA-PCI-006		
CUSTOMER DRAWING		DRAWN BY LEI 05/21'07	SHEET 3 / 3	SCALE 3:2	REV 3
SIZE A4	UNITS MM[INCH]				