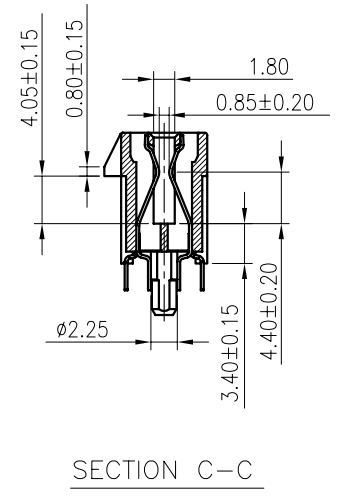
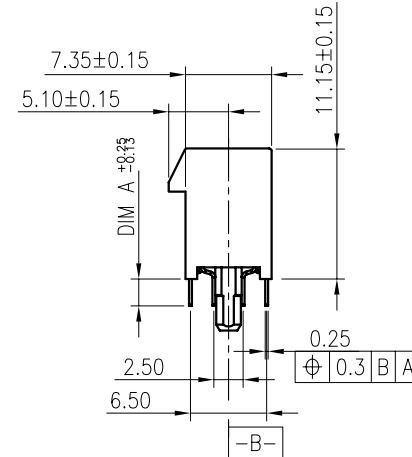
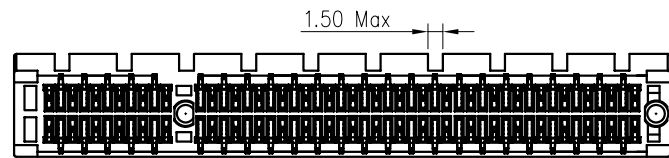
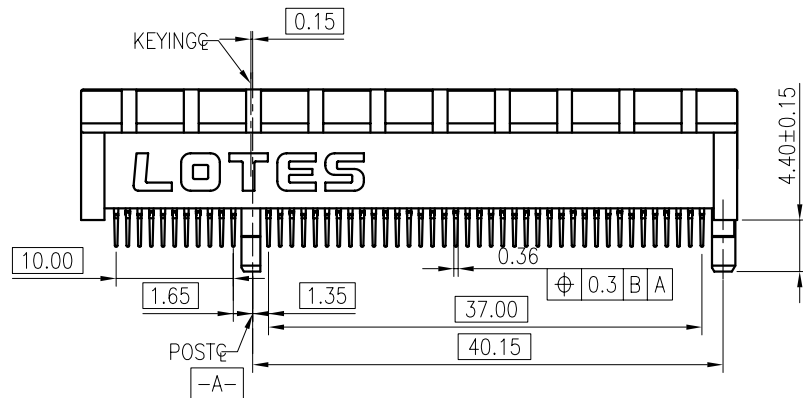
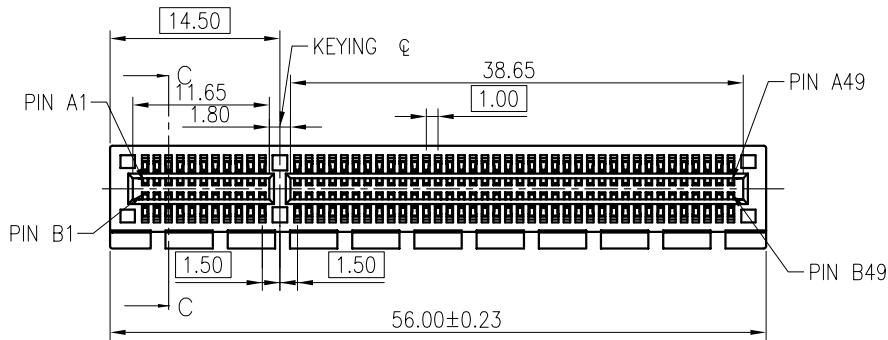


REV.	ECN NO. / DESCRIPTION	DATE
1	N030263	10/17'03
2	N040207	05/21'04
3	N060241	05/05'06
4	N070146	05/18'07

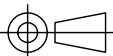


ITEM	COMPONENT	QUANTITY	MATERIAL	FINISH	DIM "A"
2	TERMINAL	98	PHOSPHOR BRONZE	GOLD PLATING ON CONTACT AREA OPTIONAL OF G/F,15U" OR 30U"	OPTIONAL: 2.30mm OR 2.54mm OR 3.10mm
1	HOUSING	1	PA46	COLOR: BLACK OR WHITE	

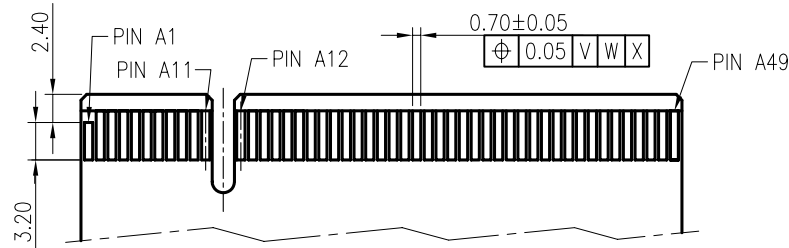
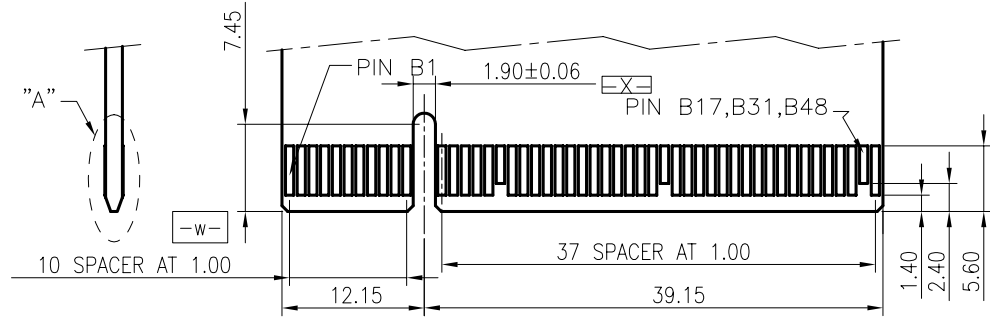
GENERAL TOLERANCES UNLESS SPECIFIED		PART NO.	LOTES		
.X ± 0.35	X.° ± 2.5°	AAA-PCI-005-***			
.XX ± 0.25	.X.° ± 1.5°	APPROVED BY SMARK 05/18'07	TITLE 98PIN PCI-EXPRESS CONNECTOR		
.XXX ± 0.15	.XX.° ± 1.0°	CHECKED BY JOE 05/18'07	DWG NO. GAP-AAA-PCI-005		
SIZE	UNITS	DRAWN BY LEI 05/18'07			
A4	MM [INCH]				
			SHEET 1 / 3		
			SCALE 3:2		
			REV 4		

REV.	ECN NO. / DESCRIPTION	DATE
1	N030263	10/17'03
2	N040207	05/21'04
3	N060241	05/05'06
4	N070146	05/18'07

PART NUMBER	SPECIFICATION	TAIL
AAA-PCI-005-K01	PA46_BLACK;PHOSPHOR BRONZE_15U" ;	2.30mm
AAA-PCI-005-K01_A	PA46_BLACK;PHOSPHOR BRONZE_15U" ;EXPRESS PACKING	2.30mm
AAA-PCI-005-F01	PA46_BLACK;PHOSPHOR BRONZE_15U" ;	2.30mm
AAA-PCI-005-K02	PA46_BLACK;PHOSPHOR BRONZE_GOLD FLASH;	2.30mm
AAA-PCI-005-K03	PA46_WHITE;PHOSPHOR BRONZE_G/F;	2.30mm
AAA-PCI-005-K04	PA46_WHITE;PHOSPHOR BRONZE_15U";	2.30mm
AAA-PCI-005-K05	PA46_BLACK;PHOSPHOR BRONZE_15U";	3.10mm
AAA-PCI-005-K07	PA46_BLACK;PHOSPHOR BRONZE_30U";	3.10mm
AAA-PCI-005-F07	PA46_BLACK;PHOSPHOR BRONZE_30U";	3.10mm
AAA-PCI-005-K09	PA46_BLACK;PHOSPHOR BRONZE_15U";	3.10mm
AAA-PCI-005-K09_A	PA46_BLACK;PHOSPHOR BRONZE_15U"; EXPRESS PACKING	3.10mm
AAA-PCI-005-F10	PA46_BLACK;PHOSPHOR BRONZE_30U";	2.30mm
AAA-PCI-005-G11	PA46_BLACK;PHOSPHOR BRONZE_15U"	2.54mm
AAA-PCI-005-K15	PA46_WHITE;PHOSPHOR BRONZE_15U";	3.10mm
AAA-PCI-005-K18	PA46_BLACK;PHOSPHOR BRONZE_G/F	3.10mm
AAA-PCI-005-K19	PA46_WHITE;PHOSPHOR BRONZE_G/F;	3.10mm
AAA-PCI-005-K20	PA46_WHITE;PHOSPHOR BRONZE_30U";	2.30mm

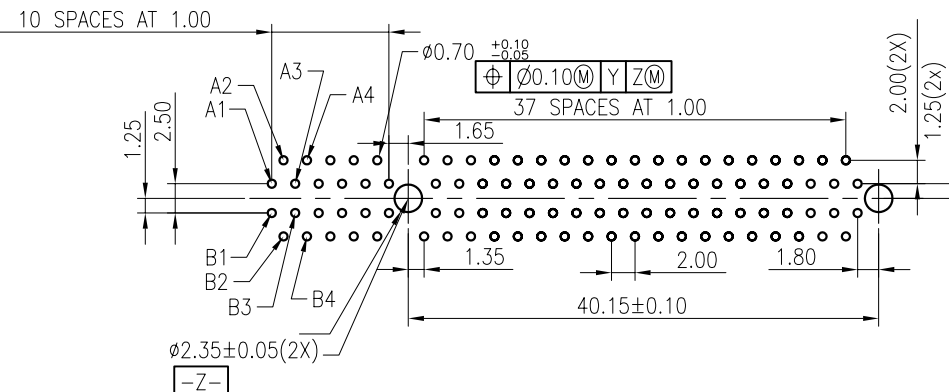
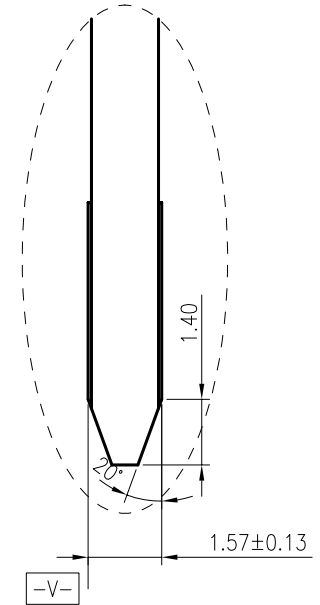
GENERAL TOLERANCES UNLESS SPECIFIED		PART NO. AAA-PCI-005-***	LOTES			
.X ± 0.35	X.° ± 2.5'					
.XX ± 0.25	.X.° ± 1.5'	APPROVED BY SMARK 05/18'07	TITLE 98PIN PCI-EXPRESS CONNECTOR			
.XXX ± 0.15	.XX.° ± 1.0'					
CUSTOMER DRAWING		CHECKED BY JOE 05/18'07	DWG NO. GAP-AAA-PCI-005			
SIZE A4	UNITS MM[INCH]	DRAWN BY LEI 05/18'07		SHEET 2 / 3	SCALE 3:2	REV 4

REV.	ECN NO. / DESCRIPTION	DATE
1	N030263	10/17'03
2	N040207	05/21'04
3	N060241	05/05'06
4	N070146	05/18'07



ADD-IN CARD EDGE-FINGER DIMENSIONS

DEFAULT TOLERANCE ± 0.05



GENERAL TOLERANCES UNLESS SPECIFIED		PART NO.	LOTES		
.X ± 0.35	X. $^{\circ} \pm 2.5^{\circ}$	AAA-PCI-005-***	TITLE 98PIN PCI-EXPRESS CONNECTOR		
.XX ± 0.25	.X. $^{\circ} \pm 1.5^{\circ}$	APPROVED BY SMARK 05/18'07			
.XXX ± 0.15	.XX. $^{\circ} \pm 1.0^{\circ}$	CHECKED BY JOE 05/18'07	DWG NO. GAP-AAA-PCI-005		
CUSTOMER DRAWING		DRAWN BY LEI 05/18'07	SHEET 3 / 3		
SIZE A4	UNITS MM [INCH]		SCALE 3:2	REV 4	