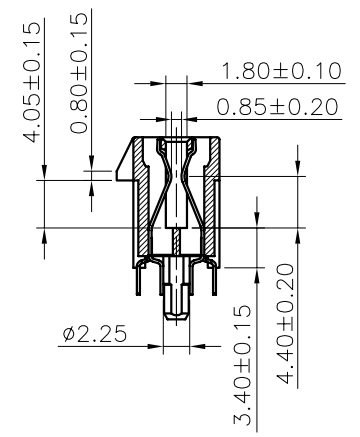
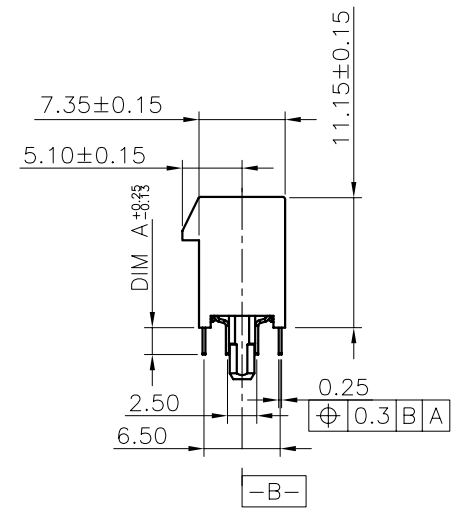
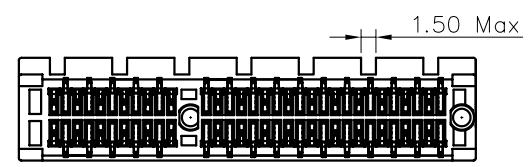
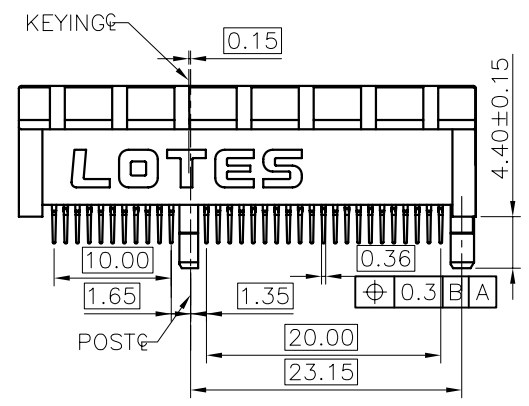
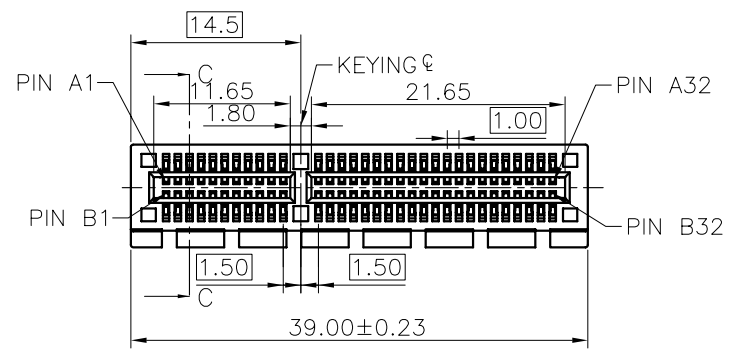


REV.	ECN NO. / DESCRIPTION	DATE
1	N030263	10/17'03
2	N040207	05/21'04
3	N070146	05/17'07



SECTION C-C

ITEM	COMPONENT	QUANTITY	MATERIAL	FINISH	DIM "A"
2	TERMINAL	64	PHOSPHOR BRONZE	GOLD PLATING ON CONTACT AREA OPTIONAL OF 1U",5U",10U" OR 15U"	OPTIONAL: 2.30mm OR 3.10mm
1	HOUSING	1	OPTIONAL: PA46, PA66 OR EQUIVALENT	COLOR: OPTIONAL BLACK,BLUE 287C, GREEN353U OR EQUIVALENT	

GENERAL TOLERANCES UNLESS SPECIFIED		PART NO. AAA-PCI-004-***	<b>LOTES</b>		
.X ±0.35	X° ±2.5°				
.XX ±0.20	X° ±1.5°	APPROVED BY SMARK 05/17'07	TITLE 64PIN PCI-EXPRESS CONNECTOR		
.XXX ±0.15	.XX° ±1.0°	CHECKED BY JOE 05/17'07			
CUSTOMER DRAWING		DRAWN BY LEI 05/17'07	DWG NO. GAP-AAA-PCI-004		
SIZE A4	UNITS MM [INCH]		SHEET 1 / 3	SCALE 3:2	REV 3

F

E

D

C

B

A

F

E

D

C

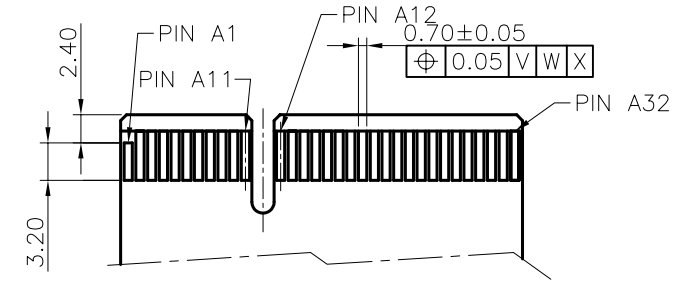
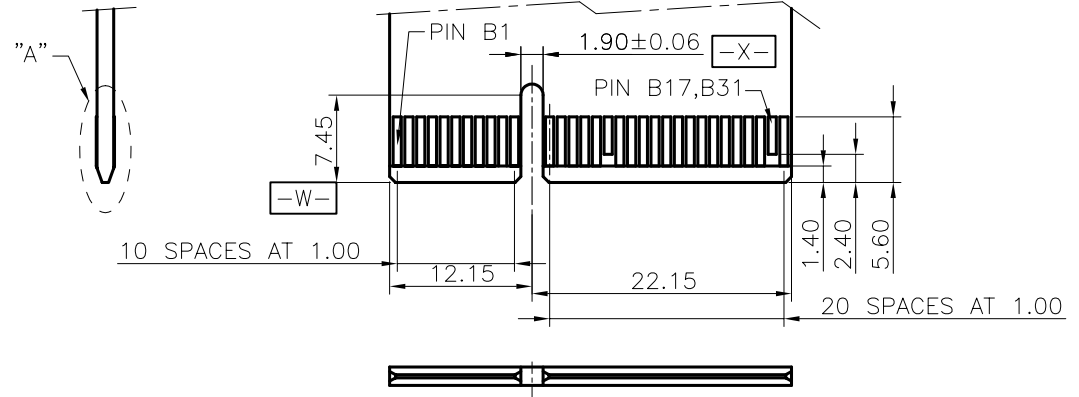
B

A

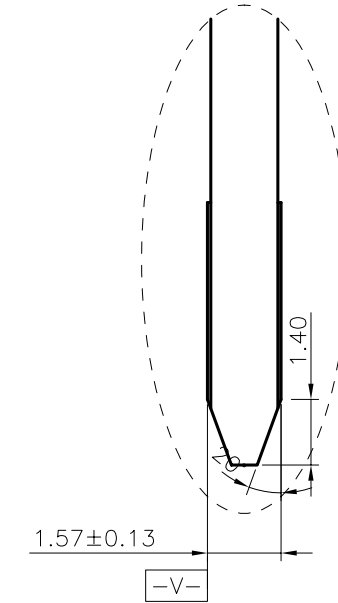
1 2 3 4 5 6 7 8

1 2 3 4 5 6 7 8

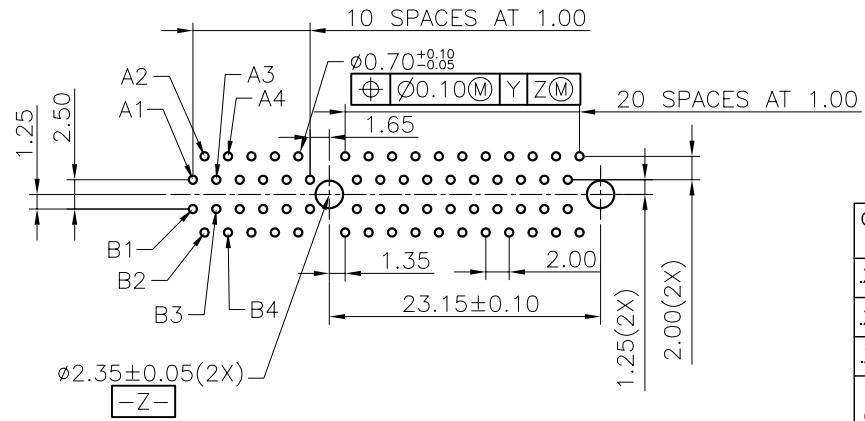
REV.	ECN NO. / DESCRIPTION	DATE
1	N030263	10/17'03
2	N040207	05/21'04
3	N070146	05/17'07



ADD-IN CARD EDGE-FINGER DIMESIONS  
DEFAULT TOLERANCE ±0.05.



DETAILE "A"  
SCALE 4/1

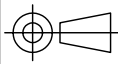


RECOMMENDED FOOTPRINT(TOP VIEW)  
DEFAULT TOLERANCE ±0.05.

GENERAL TOLERANCES UNLESS SPECIFIED		PART NO. AAA-PCI-004-***	<b>LOTES</b>		
X ±0.35	X° ±2.5°				
.XX ±0.20	X° ±1.5°	APPROVED BY SMARK 05/17'07	TITLE 64PIN PCI-EXPRESS CONNECTOR		
.XXX ±0.15	.XX° ±1.0°	CHECKED BY JOE 05/17'07	DWG NO. GAP-AAA-PCI-004		
SIZE A4	UNITS MM[INCH]	DRAWN BY LEI 05/17'07	SHEET 2 / 3	SCALE 3:2	REV 3

REV.	ECN NO. / DESCRIPTION	DATE
1	N030263	10/17'03
2	N040207	05/21'04
3	N070146	05/17'07

PART NUMBER	SPECIFICATION	TAIL
AAA-PCI-004-001	PA46_BLACK;PHOSPHOR BRONZE_15U";PSOT L.T.	2.30mm
AAA-PCI-004-002	PA46_BLACK;PHOSPHOR BRONZE_GOLD FLASH;POST. L.T.	2.30mm
AAA-PCI-004-003	PA46_WHITE;PHOSPHOR BRONZE_GOLD FLASH;POST; L.T.	2.30mm
AAA-PCI-004-004	PA46_WHITE;PHOSPHOR BRONZE_15U";POST; L.T.	2.30mm
AAA-PCI-004-005	PA46_BLACK;PHOSPHOR BRONZE_GOLD FLASH;POST; L.T.	3.10mm
AAA-PCI-004-006	PA46_WHITE;PHOSPHOR BRONZE_GOLD FLASH;POST L.T.	3.10mm
AAA-PCI-004-007	PA46_BLACK;PHOSPHOR BRONZE_15U";POST L.T.	3.10mm
AAA-PCI-004-008	PA46_YELLOW803C;PHOSPHOR BRONZE_GOLD FLASH;POST L.T.	3.10mm
AAA-PCI-004-F01	PA46_BLACK;PHOSPHOR BRONZE_15U";PSOT L.T.	2.30mm
AAA-PCI-004-K01	PA46_BLACK;PHOSPHOR BRONZE_15U";PSOT L.T.	2.30mm
AAA-PCI-004-K02	PA46_BLACK;PHOSPHOR BRONZE_GOLD FLASH;POST. L.T.	2.30mm
AAA-PCI-004-K05	PA46_BLACK;PHOSPHOR BRONZE_GOLD FLASH;POST; L.T.	3.10mm
AAA-PCI-004-K09	PA46_BLACK;PHOSPHOR BRONZE_15U";POST; L.T.	3.10mm
AAA-PCI-004-F09	PA46_BLACK;PHOSPHOR BRONZE_15U";POST L.T.	3.10mm
AAA-PCI-004-K10	PA46_BLACK;PHOSPHOR BRONZE_30U";POST L.T.	3.10mm
AAA-PCI-004-K12	PA46_GREEN353U;PHOSPHOR BRONZE_GOLD FLASH;POST L.T.	2.30mm
AAA-PCI-004-K12_A	PA46_GREEN353U;PHOSPHOR BRONZE_GOLD FLASH;POST L.T.	2.30mm
AAA-PCI-004-K13	PA46_YELLOW122U;PHOSPHOR BRONZE_GOLD FLASH";POST L.T.	2.30mm
AAA-PCI-004-K18	PA46_ORANGE1485C;BRASS_GOLD FLASH;POST L.T.	2.30mm
AAA-PCI-004-K19	PA46_WHITE;PHOSPHOR BRONZE_30U";POST L.T.	3.10mm

GENERAL TOLERANCES UNLESS SPECIFIED		PART NO. AAA-PCI-004-***	<b>LOTES</b>			
X ±0.35	X° ±2.5°					
.XX ±0.20	.X° ±1.5°	APPROVED BY SMARK 05/17'07	TITLE 64PIN PCI-EXPRESS CONNECTOR			
.XXX ±0.15	.XX° ±1.0°					
CUSTOMER DRAWING		CHECKED BY JOE 05/17'07	DWG NO. GAP-AAA-PCI-004			
SIZE A4	UNITS MM[INCH]	DRAWN BY LEI 05/17'07		SHEET 3 / 3	SCALE 3:2	REV 3