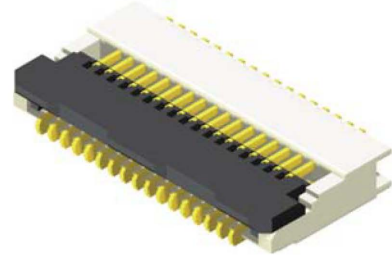


FPC/FFC 0.2mm ZIF SMT Type Side Entry For FFC T=0.2mm

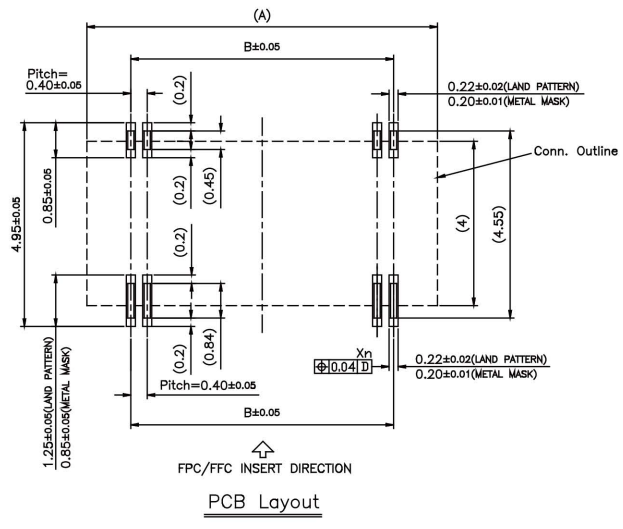
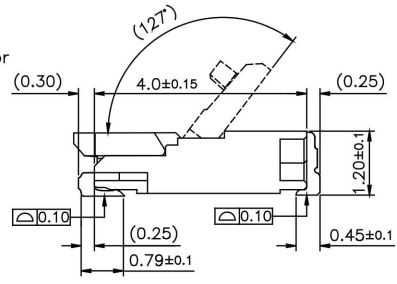
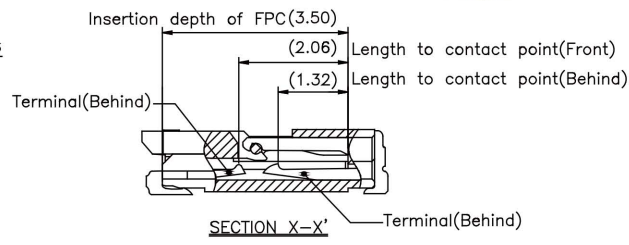
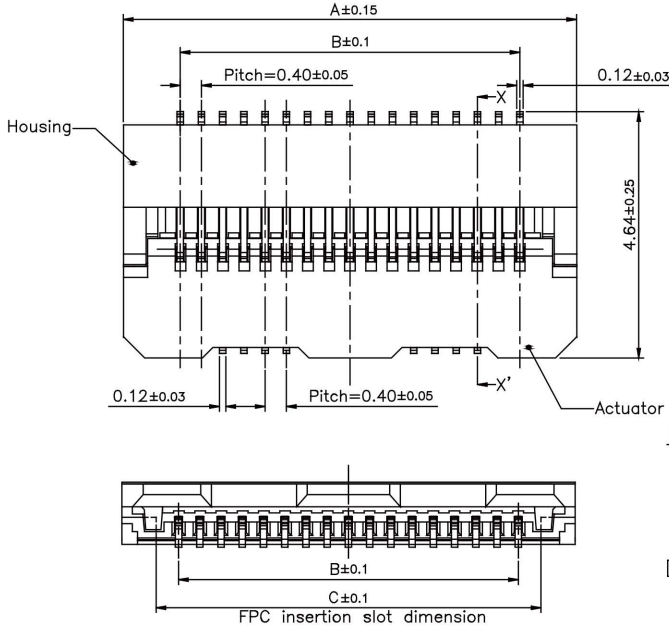


Specifications

Current Rate:0.25 AMP
 Insulation Resistance:100MΩ Min.
 Contact Resistance:20mΩ Max.
 Dielectric Voltage:120V AC for one minute
 Operation Temperature:-55°C to +85°C

Material

Insulator:Polyester,UL 94V-0
 ©Standard:LCP
 Terminal:Copper Alloy
 Plated:Gold Plated



No. of Contacts	Dim. A	Dim. B	Dim. C	n
24	6.54	4.40	5.27	12
34	8.54	6.40	7.27	17
40	9.74	7.60	8.47	20
44	10.54	8.40	9.27	22
50	11.74	8.60	10.47	25
60	13.74	11.60	12.47	30
68	15.34	13.20	14.09	34
70	15.74	13.60	14.47	35
80	17.74	15.60	16.47	40
90	19.74	17.60	18.47	45
100	21.74	19.60	20.47	50
120	25.74	23.60	24.47	60

ORDER INFORMATION

