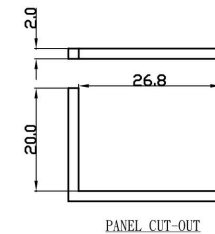
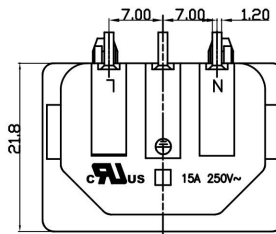
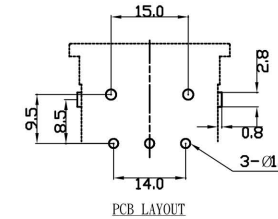
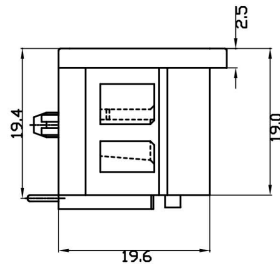
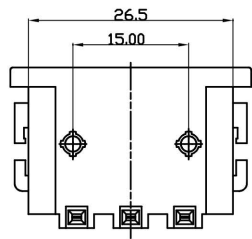
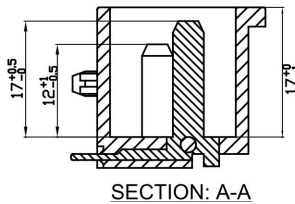
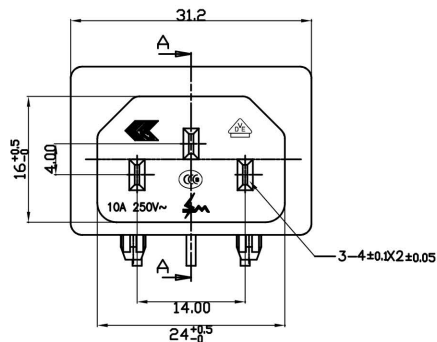


REV	ECN NO.	DESCRIPTION	APPROVED BY	DATE
A		PROPOSAL DRAWING	JASON MENG	2010-05-24

SPECIFICATION

- A: MATERIAL:**
 1.HOUSING:PBT WITH 30%GF UL 94V-0
 2.TERMINAL: COPPER ALLOY,TIN PLATED
 3.METAL CLIP: TINPLATE
- B: CHARACTERISTICS:**
 1.RATING: 10A 250V~ ENEC CCC VDE
 15A 250V~ UL CUL
 2.INSULATION RESISTANCE:OVER 100M MIN,AT 500V DC
 3.ELECTRIC STRENGTH: AC 2000V FOR ONE MINUTE
- C: APPROVALS:**
 UL,VDE,CCC,ENEC



DO NOT SCALE DRAWING

PART NO.	VIEW	DESCRIPTION
11619-202-T	A	SOLDER WIRE TYPE

DIMENSIONS:
 MM [INCH] INCH [MM] MM ONLY

UNLESS OTHERWISE SPECIFIED, GENERAL TOLERANCE:

DECIMALS ANGLES
 X. ±0.38 [0.015] X° ±3°
 .X ±0.25 [0.010] .X° ±1.0°
 .XX ±0.13 [0.005]

CAD GENERATED DRAWING, DO NOT MANUALLY UPDATE

THIRD ANGLE PROJECTION



TITLE		AC INLEF	
PART NO.	11619-202-T	APPROVED BY	JASON MENG
DRAWING NO.	11619-202-T	CHECKED BY	STEVEN LIU
MATERIAL		DRAWN BY	ANNIE WANG
FINISH		GENERATD DATE	2010-05-24
SCALE	NONE	SHEET	1/1
REV.	A	SIZE:A4	FILE NO.:JJJP-A-05-003