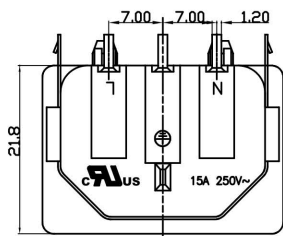
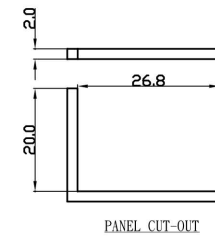
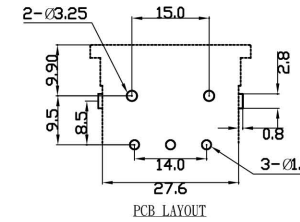
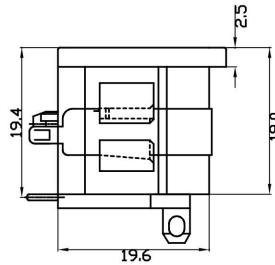
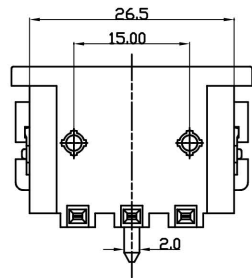
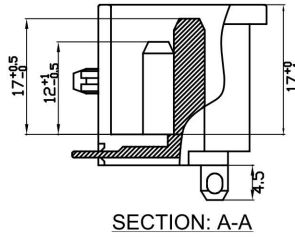
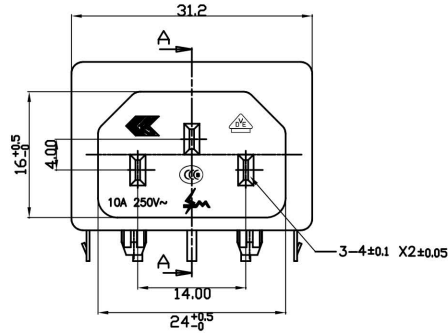


REV	ECN NO.	DESCRIPTION	APPROVED BY	DATE
A		PROPOSAL DRAWING	JASON MENG	2010-05-24

SPECIFICATION

- A: MATERIAL:**
 1. HOUSING: PBT WITH 30%GF UL 94V-0
 2. TERMINAL: COPPER ALLOY, TIN PLATED
 3. METAL CLIP: TIN PLATE
- B: CHARACTERISTICS:**
 1. RATING: 10A 250V~ ENEC CCC VDE
 15A 250V~ UL CUL
 2. INSULATION RESISTANCE: OVER 100M MIN, AT 500V DC
 3. ELECTRIC STRENGTH: AC 2000V FOR ONE MINUTE
- C: APPROVALS:**
 UL, VDE, CCC, ENEC



PART NO.	VIEW	DESCRIPTION
11619-202-NTM	A	SOLDER WIRE TYPE

DIMENSIONS:
 MM [INCH] INCH [MM] MM ONLY

UNLESS OTHERWISE SPECIFIED, GENERAL TOLERANCE:

DECIMALS ANGLES
 X. ±0.38 [0.015] X° ±3°
 .X ±0.25 [0.010] .X° ±1.0°
 .XX ±0.13 [0.005]

CAD GENERATED DRAWING, DO NOT MANUALLY UPDATE

THIRD ANGLE PROJECTION



TITLE	AC INLEF			
PART NO.	11619-202-NTM	APPROVED BY	JASON MENG	
DRAWING NO.	11619-202-NTM	CHECKED BY	STEVEN LIU	
MATERIAL			DRAWN BY	ANNIE WANG
FINISH			GENERATD DATE	2010-05-24
SCALE	SHEET	REV.	SIZE:A4	
NONE	1/1	A	FILE NO.:JJP-A-05-003	

DO NOT SCALE DRAWING