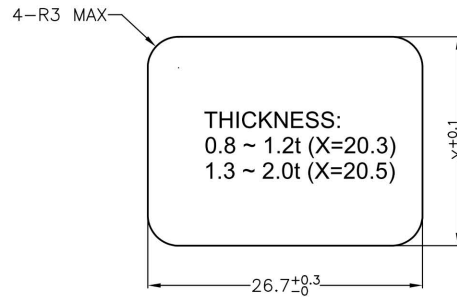
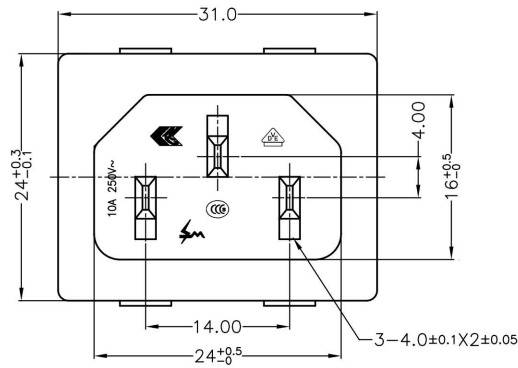


SoniTexx®

RoHS COMPLIANT

REVISIONS

REV	ECN NO.	DESCRIPTION	APPROVED BY	DATE
A		PROPOSAL DRAWING	JASON MENG	2010-05-24



PANEL CUT-OUT

SPECIFICATION

A: MATERIAL:

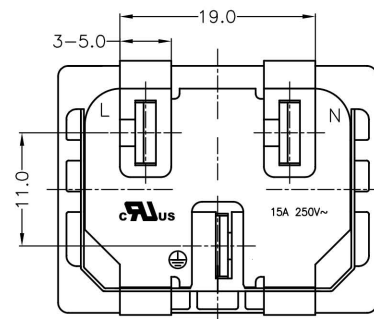
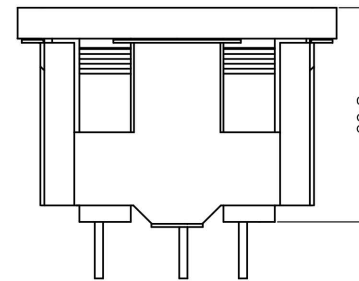
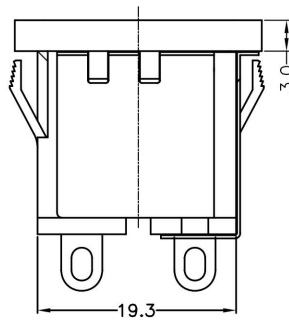
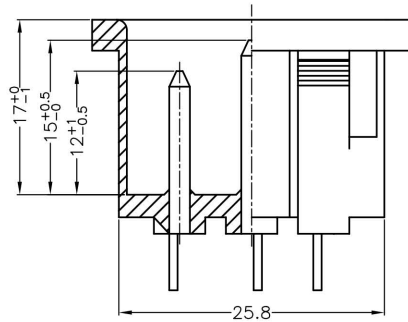
- 1. HOUSING: NYLON 66 FLAMMABILITY UL 94V-0
- 2. TERMINAL: COPPER ALLOY, TIN PLATED


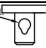
B: CHARACTERISTICS:

- 1. RATING: 15A 250V~ NORTH AMERICA
10A 250V~ EUROPE
- 2. INSULATION RESISTANCE : 100MΩ MIN, AT 500V DC
- 3. ELECTRIC STRENGTH : AC 2,000 V FOR ONE MINUTE

C: APPROVALS:

- UL, VDE, CCC, ENEC



PART NO.	TERMINAL OPTION	DESCRIPTION
11619-102-PNM	4.0MM/SOLDER TAB 	SOLDER WIRE TYPE
11619-102-PQM	4.8mm Q.D./SOLDER TAB 	SOLDER WIRE TYPE

DO NOT SCALE DRAWING

DIMENSIONS:
 MM [INCH] INCH [MM] MM ONLY

UNLESS OTHERWISE SPECIFIED,
GENERAL TOLERANCE:

DECIMALS ANGLES
 X. ±0.38 [0.015] X' ±3'
 .X ±0.25 [0.010] .X' ±1.0'
 .XX ±0.13 [0.005]

CAD GENERATED DRAWING,
DO NOT MANUALLY UPDATE

THIRD ANGLE PROJECTION



TITLE	AC INLEF			
PART NO.	11619-102-PNM/PQM	APPROVED BY	JASON MENG	
DRAWING NO.	11619-102-PNM/PQM	CHECKED BY	STEVEN LIU	
MATERIAL	/		DRAWN BY	ANNIE WANG
FINISH			GENERATD DATE	2010-05-24
SCALE	SHEET	REV.	SIZE:A4	
NONE	1/1	A	FILE NO.:JJP-A-05-003	