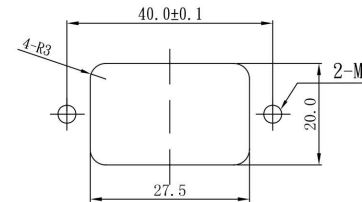
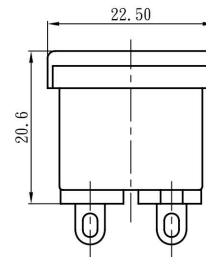
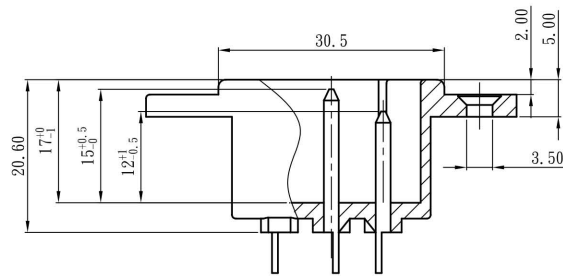
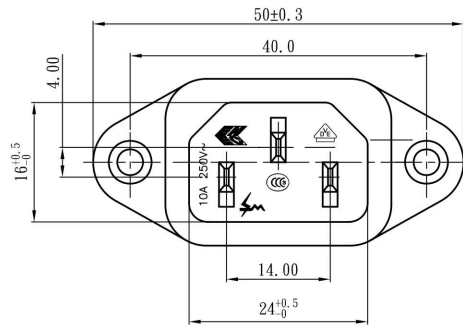


REVISIONS

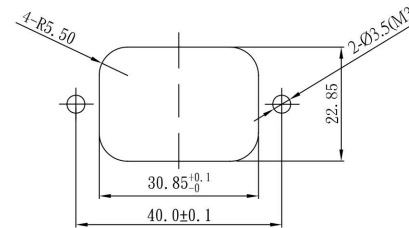
| REV | ECN NO. | DESCRIPTION | APPROVED BY | DATE |
|-----|---------|------------------|-------------|------------|
| A | | PROPOSAL DRAWING | JASON MENG | 2010-05-24 |

SPECIFICATION

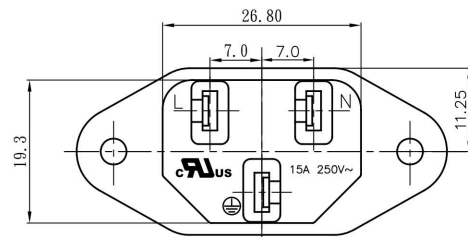
- A: MATERIAL:
 1.HOUSING: PBT WITH GLASS FIBER UL 94V-0
 2.TERMINAL: COPPER ALLOY,TIN PLATED
- B: CHARACTERISTICS:
 1.RATING: 15A250V~ UL CUL
 10A250V~ ENEC CCC VDE
 2.INSULATION RESISTANCE : OVER 100MW 500V DC
 3.DIFLECTRIC STRENGTH : 2000V AC ONE MINUTE
- C: APPROVALS:
 UL,VDE,CCC,ENEC





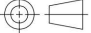
FOR FRONT MOUNTING USE



FOR REAR MOUNTING USE
 PANEL CUT-OUT



| PART NO. | TERMINAL OPTION | DESCRIPTION |
|-------------|---|------------------|
| 11619-101-N | 4.0MM/SOLDER TAB  | SOLDER WIRE TYPE |
| 11619-101-Q | 4.8mm Q.D./SOLDER TAB  | SOLDER WIRE TYPE |

| DIMENSIONS: | | | |
|--|------------------------------------|---|-----------------------|
| <input type="checkbox"/> MM [INCH] | <input type="checkbox"/> INCH [MM] | <input checked="" type="checkbox"/> MM ONLY | |
| UNLESS OTHERWISE SPECIFIED, GENERAL TOLERANCE: | | TITLE AC INLEF | |
| DECIMALS | ANGLES | PART NO. | 11619-101-N/Q |
| .X ±0.38 [0.015] | .X° ±3° | APPROVED BY | JASON MENG |
| .X ±0.25 [0.010] | .X° ±1.0° | DRAWING NO. | 11619-101-N/Q |
| .XX ±0.13 [0.005] | | CHECKED BY | STEVEN LIU |
| CAD GENERATED DRAWING, DO NOT MANUALLY UPDATE | | MATERIAL | |
| THIRD ANGLE PROJECTION  | | DRAWN BY | ANNIE WANG |
| | | GENERATED DATE | 2010-05-24 |
| | | SCALE | SHEET |
| | | NONE | 1/1 |
| | | REV. | SIZE:A4 |
| | | A | FILE NO.:JJP-A-05-003 |

DO NOT SCALE DRAWING